

# How do I install a printer driver in Windows 10?

## Information:

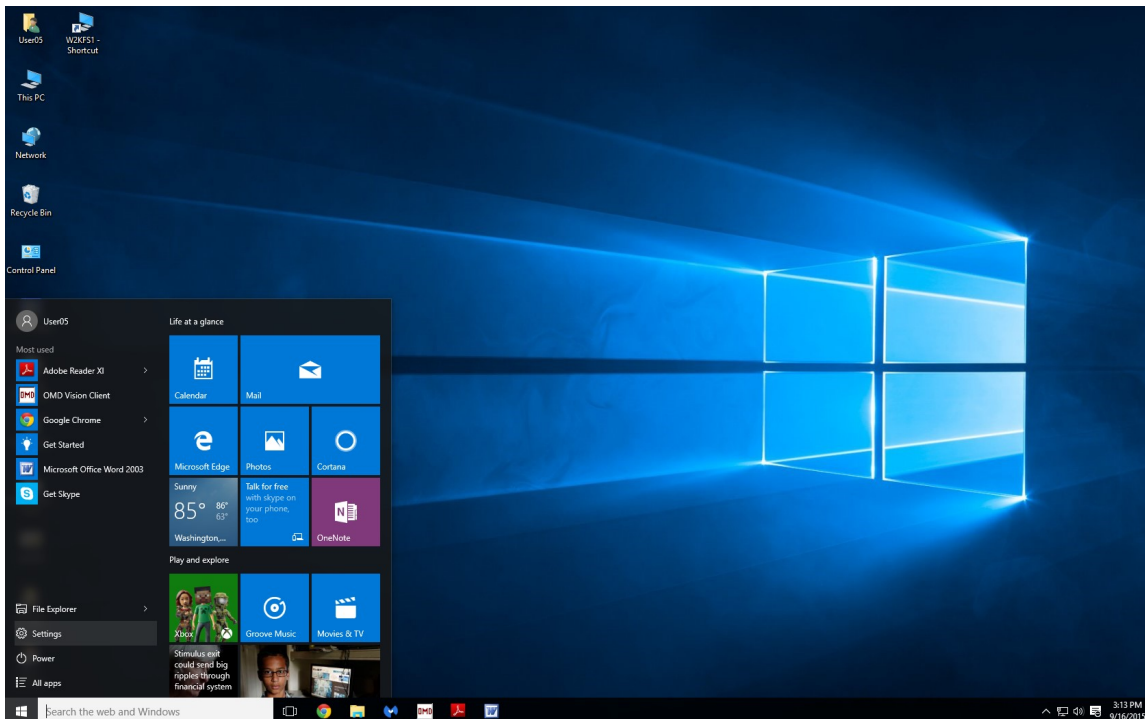
- You will need to log on as Administrator or Power User to install printer drivers.
- Make sure that you close all other applications before starting the installation.
- If you are updating to the latest version of the printer driver, it is important to uninstall the previous version first - always restart your computer after uninstalling drivers.

First, download the driver you want to install. Make sure that you download the correct version for your operating system.

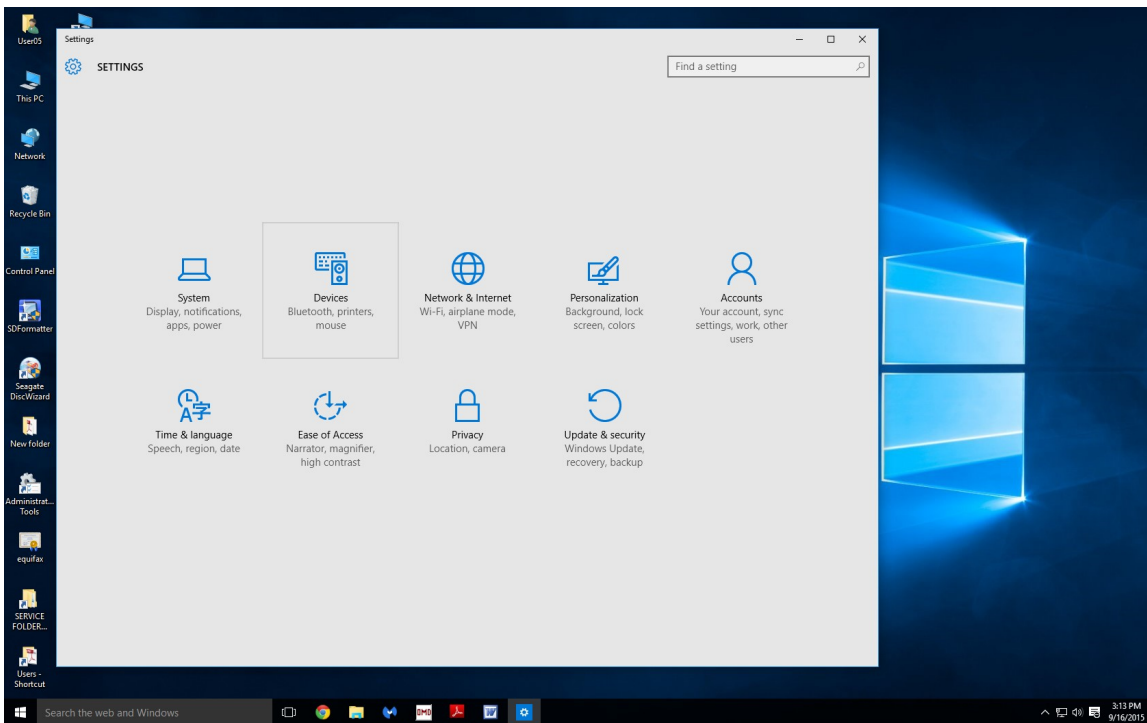
Canon drivers: [www.usa.canon.com](http://www.usa.canon.com)

Savin drivers: [www.savin.com](http://www.savin.com)

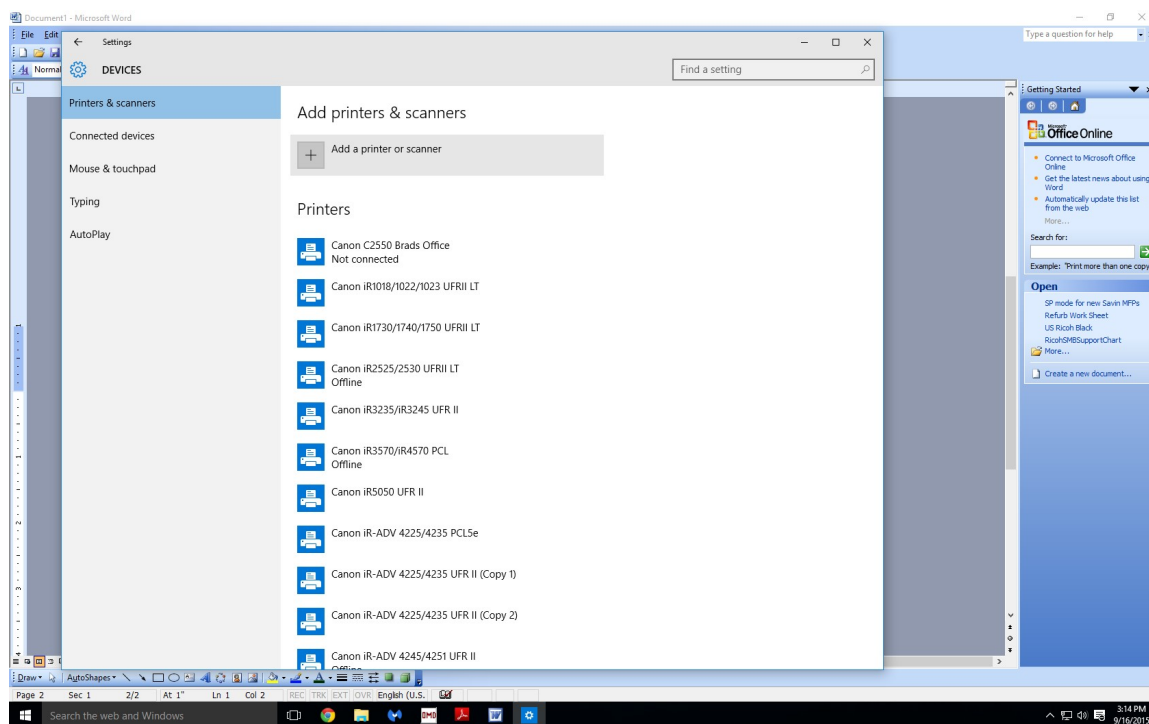
Unzip the file and save it in a temporary folder to access later. Make sure you know where this folder is, as you will need to browse to it later as part of the installation.



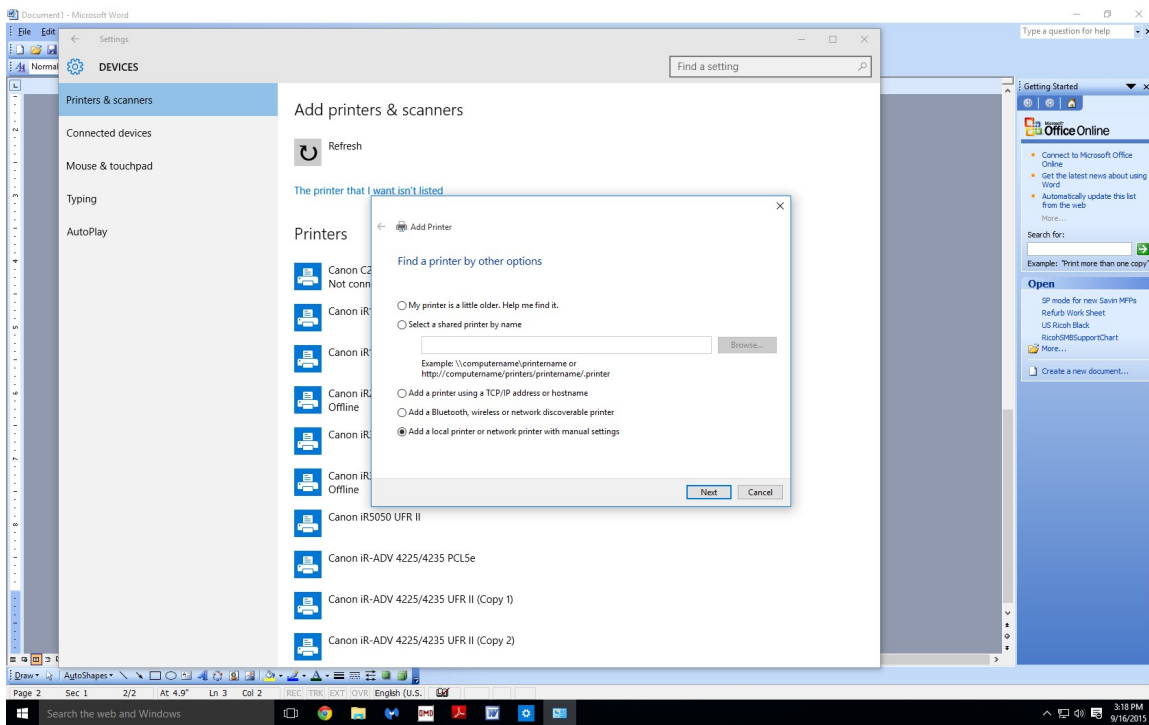
Click the Start window in lower left corner, then select “Settings”.



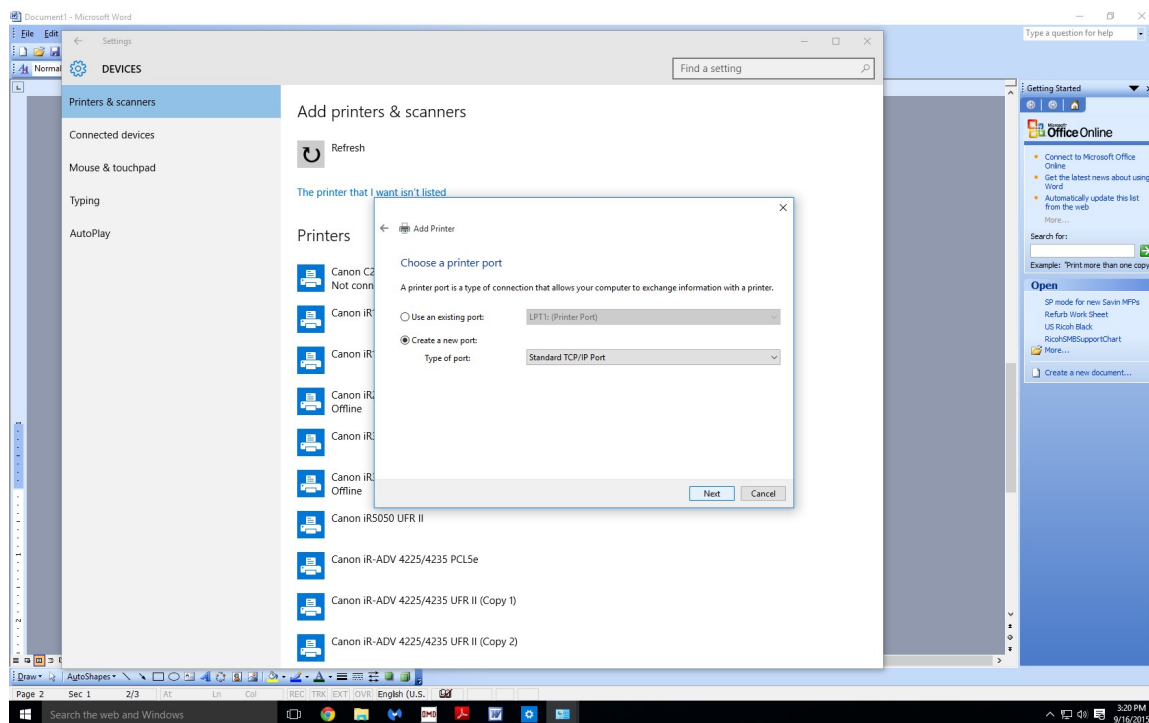
In the “Settings” window click on “Devices” icon



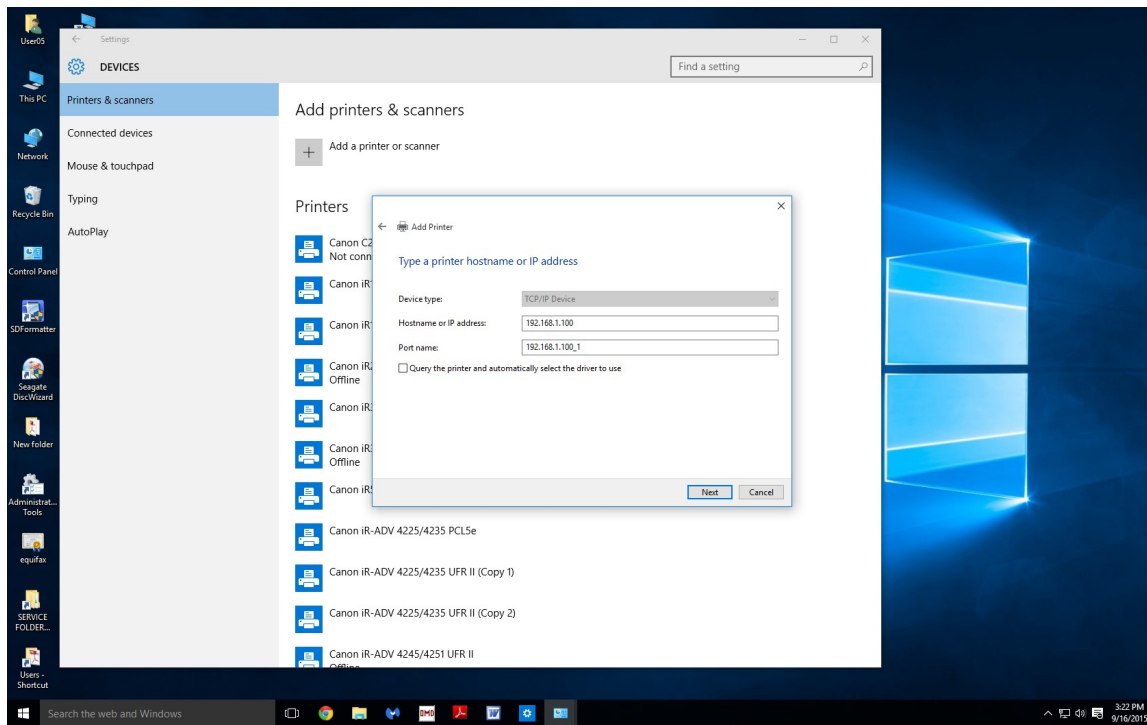
Select “Add a printer or scanner” “Searching for available printers” appears and then after a few seconds you can select “The printer I want isn’t listed”. The dialog box below will open.



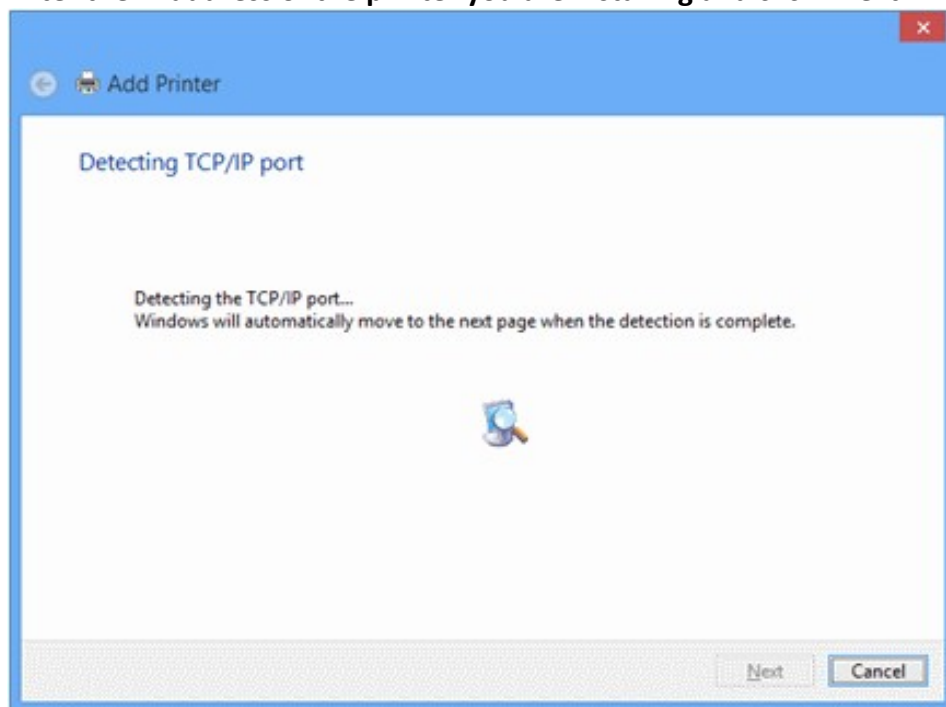
Click on “Select a local printer or network printer with manual settings” The “Choose a printer port” dialog will appear.



If the port exists already select “Use an existing port”. Otherwise, click on “Create a new port” and select “Standard TCP IP port from the drop down options. Click “Next”. You now have the option of adding the printer IP address.

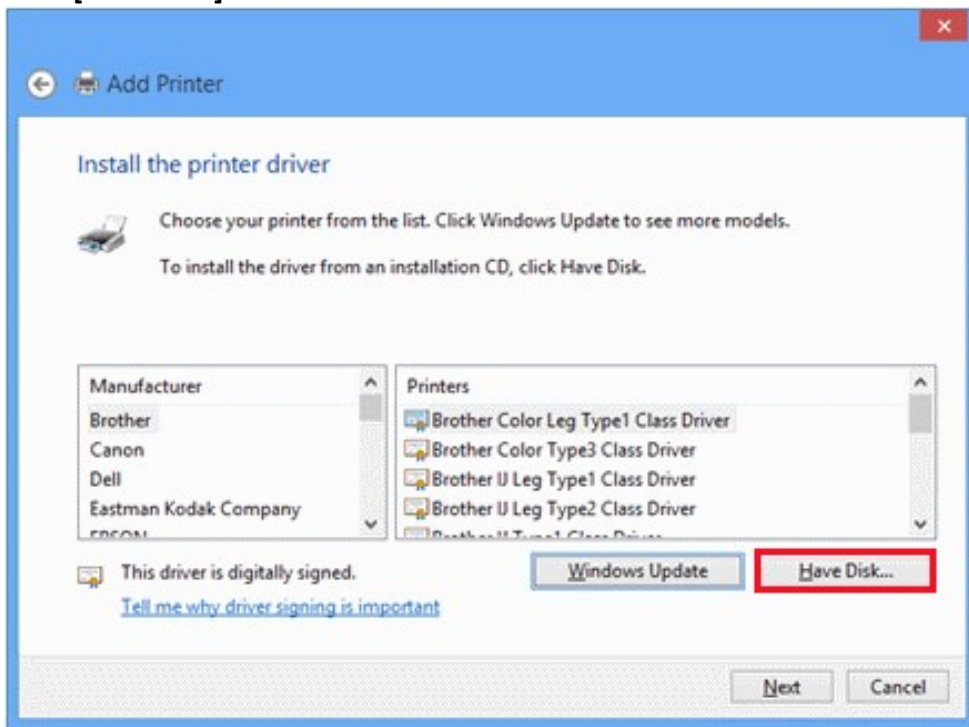


**Enter the IP address of the printer you are installing and click “Next”**



**Detecting TCP/IP port screen is displayed, followed by detecting the driver model screen. Once the TCP/IP port is found, the printer driver install screen appears.....**

Click [Have Disk].



Remaining steps are very similar to previous Windows printer installations. Browse to the folder that contains the downloaded driver and select the .inf file, choose the correct printer from the list that appears, etc.